



eTEA Update - Jan. 12, 2009

Your Staff: Ann Gallagher, Carole Mumford, Brian Szaks, Gene Jeffers

TEA Activities

- Jan 20 - 6-8 pm - Eastern Div. Mixer, Discovery Cove. Cash bar. RSVP steve.birket@birket.com
- Jan. 21 - Western Div.: Bonding Roundtable see page 3 for detail and to RSVP
- Feb. 12 - Western Div.: Working Together Roundtable - details to come
- Feb. 18 - 5:30 pm - GB Mixer, Gordon Biersch Restaurant, Burbank
- March 5 - Western Div.: Golf Tournament, Details/RSVP Brian Leonard brianl@dillonworks.com
- March 6-7 - TEA Summit, Anaheim. Space is limited, book now to reserve your seat. See p. 3
- March 7 - TEA's Thea Awards presented by Economics Research Associates
- March 25 - TiLEzone London see page 9
- April 25-26 - Europe & Middle East Div. - Mixer at DEAL, Dubai

The Thea Awards - Enough Said!

In this most challenging year, the Thea Awards are your most important event to acknowledge outstanding efforts within our industry and to network. No other event will bring so many of our industry's decisionmakers and key contacts together. No other event specifically focuses on our industry. No other event builds in so many chances to see old friends, meet new contacts, and to be seen by so many of our industry's top people. They'll be at the Thea Awards, will you?

If you are serious about succeeding in this industry and want to make every opportunity work more effectively for you, then you need to be in the Disneyland Hotel Grand Ballroom on March 7. Click here for the TEA Boxoffice.

See Page 2 for advertising opportunities in the Thea Awards Program. Put your good name with the Thea Awards! It supports the Thea Awards and makes good business sense!

Did you work on EPCOT?

At the March 7 Thea Awards, EPCOT will be honored with a richly deserved Thea Classic Award. We need your help!

Would you like to be included in the official Thea Awards credits for this project? If so, be sure to click here to download a special invitation from Marty Sklar to ensure that you are included in the official Thea Awards credits list. Deadline is January 23, so don't wait. Do it now!

THE 15TH ANNUAL
THEA AWARDS
AND GALA

DISNEYLAND HOTEL
MARCH 7, 2009

TO CELEBRATE EXCELLENCE IN THE CREATION OF
COMPELLING PLACES AND EXPERIENCES

To purchase tickets, visit www.teaconnect.org

And don't forget about the TEA Summit, March 6-7! Another great networking/business development opportunity. Space at this one and a half day event is strictly limited (we've sold out every year well in advance). Book now to be in the room for this intimate exploration of business opportunities and expanded networking activities. A preliminary conference agenda can be found on page 3.

The Thea Awards Happen Only Once a Year and so does the opportunity to advertise in the Official Thea Awards Program.

Put your good name with the Thea Awards and their recipients by advertising in the official Thea Awards program. With a number of articles and all of the official Thea Awards credits lists, the 15th Annual Thea Awards program can put you in front of Awards attendees and hundreds of additional decisionmakers. Distributed at the Awards show and at a number of international industry trade-shows, the Thea Awards Program will once again be edited by Judith Rubin and will feature articles on the award recipients as well as complete credits lists.

Deadline for space commitment is February 1st, art deadline is February 10. Business card to full page ad, you won't find a more targeted publication in the industry! And you'll be helping to make the Thea Awards a continuing success!

Email Gene@teacconnect.org for ad specific, prices and spot availability. Hurry, as prime spots within the book go quickly!

Have you heard about the

TEA NEWSFEED?

News • Member Photos • Division Announcements •
Event Invitations • Important Information
"What you need to know"

<http://www.themedentertainmentassociation.blogspot.com>
Updated every Monday and Thursday night

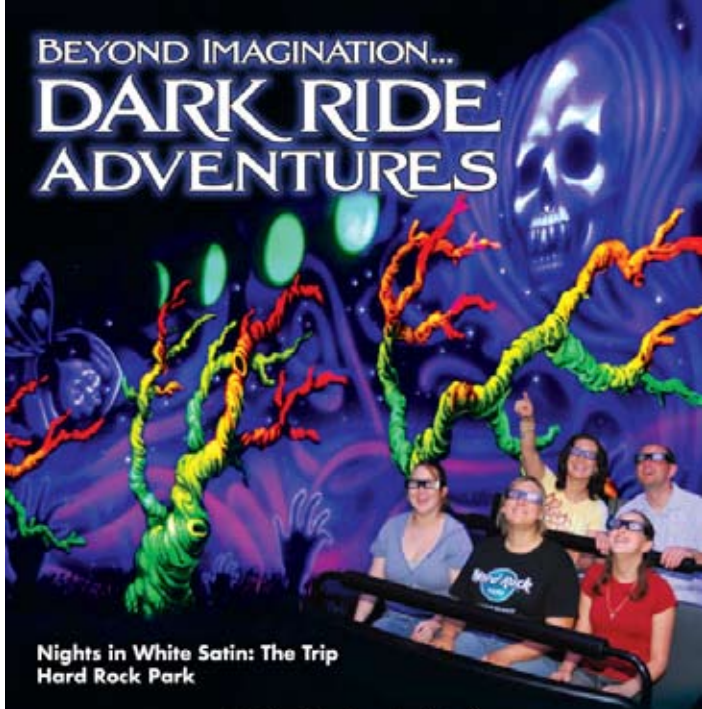
THORBURN ASSOCIATES
DESIGN AND ENGINEERING



Acoustics
Lighting
Audiovisual
Data/Telecom

www.TA-Inc.com 510-886-7826
San Francisco Raleigh-Durham Los Angeles

BEYOND IMAGINATION...
DARK RIDE ADVENTURES



Nights in White Satin: The Trip
Hard Rock Park

SALLY CORPORATION

THE GREAT AMERICAN DARK RIDE COMPANY®
(904) 355-7100 • www.sallycorp.com

6th Annual TEA Summit 2009

March 6 & 7
The Disneyland Hotel, Anaheim, California

An educational summit designed for those looking to grow their business in the Experience Industry.

The TEA Summit 2009 brings together the world's leading professionals focused on creating compelling places and experiences to learn, network and exchange ideas, ultimately building stronger businesses.

Join us for this stimulating Think-Tank discussion that will explore cutting-edge case studies of Thea Award-Winning projects along with means and methods of how we can continue to succeed in the current economic climate.

This year's focus includes:

- **Business Survival in a Challenging Economy** – Both business advisors and business owners will share their experience and expertise.
- **"Global Trend Watch"** – who is still spending entertainment dollars and where/why.
- **Project Case Studies** – an insiders look to a number of this year's Thea Award-Winning projects.

A mixture of presentations, interviews and panels with extensive Q&A opportunities, this premier event is sure to engage, educate and inspire.

Seats are limited – so reserve your's today!

Visit www.teaconnect.org to order your tickets online.



DESIGN DEVELOPMENT • SET CONSTRUCTION • SPECIAL EFFECTS • THEATRICAL RIGGING • FLYING
Museums, Theme Parks, TV Studios, Casinos, Theatres & Live Events

416.410.1102 www.performancesolutions.net

celebrating our 20th anniversary



You Can Help TEA Have a Productive Planning Meeting in Seattle Jan 15-16

A Note from TEA President Steve Thorburn

On Thurs-Fri, Jan 15-16, the TEA International Board and leadership will convene in Seattle for the annual Planning Meeting. The agenda will cover the following general areas:

- Updating the TEA Strategic Plan (you can review the existing SP at http://teaconnect.org/about_plan.htm)
- Reviewing proposed changes to TEA bylaws (you can see the existing bylaws at <http://teaconnect.org/bylaws.pdf>)
- Setting key priorities for the Association for 2009, including updating TEA's web presence and marketing plan to expand all of our member groups.

The bylaws changes are being made for two reasons: First, to bring them in line with the way the association has been run over the past few years. Second, to formalize the procedure for future bylaws changes to be jointly approved by the membership and the Board.

Share Your Ideas

TEA members: Your input is sought in advance of this meeting and at any time. As we head into what is likely to be a challenging period for the Experience Industry, it is critical to discuss and develop strategies and tactics to help keep TEA and the membership moving forward.

Please share your thoughts and ideas now by contacting your regional board rep or committee chair, or a member of the TEA International Board. Or email your thoughts to me at SJT@ta-inc.com.

If you've got something to contribute, please don't delay – the planning meeting convenes in just a few days.



International Bonding Presentation Followed by Q & A

A Roundtable Discussion Presented By the Western Division Of the TEA

Please join us for an engaging roundtable discussion including difficulties in qualifying, how international differs from domestic bonding, coverage in countries like Singapore, China, and UAE, for foreign versus domestic carriers, and satisfying client requirements. Space is limited. Two attendees per company.

Speakers Teri Jackson, Senior VP - Surety Practice
Wells Fargo Insurance Services Inc.

Kristin Kerr, Account Underwriter
Travelers Insurance Company

Organizer Lynn Allmandinger, Wells Fargo of CA Insurance Services

when + where **Wednesday, January 21**

Roundtable - 4:30-5:30PM

at the TEA Office

GB Mixer - 6:00PM

Gordon Biersch - 145 S San Fernando Blvd, Burbank

Attendance of the Roundtable Discussion is NOT required to attend this mixer. ALL members are welcome.

RSVP to Lynn Allmandinger, Lynn_Allmandinger@wellsfargois.com 818 464 9378



Members in the News

The Weber Group designed and built a new exhibit at Holiday World (formerly Santa Claus Land) in Santa Claus, IN to honor "Santa Jim" Yellig, a WWI veteran who played the role of Santa for underprivileged kids while in the service, and continued the tradition when he returned home to the Santa Claus area. Opened last month in time for Holiday celebrations, the exhibit features a life-size recreation of Santa Jim in his original Santa suit, yak fur beard, and trademark holly leaf belt buckle. It also includes the original oil on canvas 15x9 foot 1959 mural commissioned by California artist Lee Sorenson.

More info: **Penny Peavler** pennypeavler@webergroupinc.com.



Sarner Gives Facelift to Alton Towers Monorail

Sarner has transformed a mere method of transportation into an exciting escape to the UK's favorite theme park resort. The eight monorail trains used through out the resort to transport guests between the theme park's main entrance and its two hotels have always been seen as invaluable to visitors. Now Sarner, working closely with **Merlin Themeparks** Creative Director, have re-themed each of the trains to complement rides and attractions throughout the resort through the new Caribbean, Pirates, Explorer, Moo-norail, Celebration, the Daisy Train, Strawberry Fields, and Jelly Bean train decor themes. More info: **Charlotte Myer** cmyer@sarner.com



inspiration comes in many forms...
...ours comes in a can



Your Source for
Theme Inspired Paints and Coatings



Industry Partners



(800) 942-3166 • modernmasters.com

**ANIMA
TRONICS**

Humans, animals,
natural or not...



825 East Cooley Avenue
San Bernardino, CA 92408
(909) 799-3030 www.garnerholt.com

RFPs/Opportunities

We apologize if some of the deadlines are very short. We understand the problem, but feel that it is important to list projects even when they have relatively short deadlines, leaving the decision to respond or not up to you.

UK Southampton - architect, project management, exhibition design and more for new museum. **Deadline is Jan. 19.** email gene@teaconnect.org and ask for UK Southampton.

UK Hexham exhibit design interpretation services. **Deadline is Jan. 23.** interpretation and design plans for two new developments at existing museum. email gene@teaconnect.org and ask for UK Hexham exhibit.

France Paris - projectors and integrated system across number of retail boutiques. **Deadline is Jan. 23.** email gene@teaconnect.org and ask for France Paris projectors.

Canada Ottawa - development of 5 year museum strategic plan. **Deadline is Jan. 29.** email gene@teaconnect.org and ask for Canada Ottawa museum plan.

Indiana Turkey Run - exhibition services for state park. **Preproposal conference already held. Deadline for proposals has been extended to Jan. 30.** email gene@teaconnect.org and ask for Indiana Turkey Run exhibition.

California Sacramento - produce final exhibit design, fabrication, maintenance, repair, installation and renovation of long term museum quality exhibits and special events displays for state of California water resources board. **Deadline is Feb. 16.** email gene@teaconnect.org and ask for California Sacramento exhibits.



Turn **YOUR** creativity into
Engineered Entertainment with
RANDO PRODUCTIONS



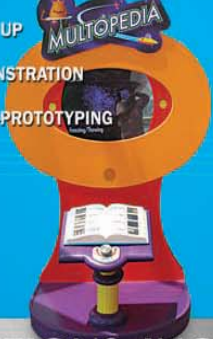
R
A
N
D
O
P
R
O
D
U
C
T
I
O
N
S

INDUSTRIES SERVED

- ⊗ Theme-park
- ⊗ Museum/Aquarium
- ⊗ Television Commercials
- ⊗ Music Videos
- ⊗ Exhibits/Trade Show
- ⊗ Mobile Entertainment Systems
- ⊗ Others requiring specialty equipment

OUR COMBINED EXPERIENCE COVERS:

- ⊗ **CONCEPT THRU COMPLETION**
Turnkey Systems
- ⊗ **SPECIAL EFFECTS**
Fog, smoke, water + flame effects
- ⊗ **MECHANICAL EFFECTS/
SHOW ACTION EQUIPMENT**
Hydraulics, pneumatics, rigging
- ⊗ **THEMED SCENERY/
THEME PARK PARADE FLOATS**
Automation and control systems
- ⊗ **ENGINEERING SERVICES**
Facility interface determination
Equipment development
Troubleshooting
- ⊗ **CUSTOM RENTAL EQUIPMENT**
Turntables, rolling rooms, pumps,
heavy truss, tanks.
- ⊗ **MOCK UP**
- ⊗ **DEMONSTRATION**
- ⊗ **RAPID-PROTOTYPING**

RANDO PRODUCTIONS, INC
CREATING TOMORROWS ENTERTAINMENT TODAY
818.982.4300
RANDOPRODUCTIONS.COM
joer@randoproductions.com
11939 Sherman Road, North Hollywood, Ca 91605

RFPs/Opportunities

We apologize if some of the deadlines are very short. We understand the problem, but feel that it is important to list projects even when they have relatively short deadlines, leaving the decision to respond or not up to you.

UK Southampton - architect, project management, exhibition design and more for new museum. **Deadline is Jan. 19.** email gene@teaconnect.org and ask for UK Southampton.

UK Hexham exhibit design interpretation services. **Deadline is Jan. 23.** interpretation and design plans for two new developments at existing museum. email gene@teaconnect.org and ask for UK Hexham exhibit.

France Paris - projectors and integrated system across number of retail boutiques. **Deadline is Jan. 23.** email gene@teaconnect.org and ask for France Paris projectors.

Canada Ottawa - development of 5 year museum strategic plan. **Deadline is Jan. 29.** email gene@teaconnect.org and ask for Canada Ottawa museum plan.

Indiana Turkey Run - exhibition services for state park. **Preproposal conference already held. Deadline for proposals has been extended to Jan. 30.** email gene@teaconnect.org and ask for Indiana Turkey Run exhibition.

California Sacramento - produce final exhibit design, fabrication, maintenance, repair, installation and renovation of long term museum quality exhibits and special events displays for state of California water resources board. **Deadline is Feb. 16.** email gene@teaconnect.org and ask for California Sacramento exhibits.



Turn **YOUR** creativity into Engineered Entertainment with **RANDO PRODUCTIONS**

RANDO PRODUCTIONS

INDUSTRIES SERVED

- ⊗ Theme-park
- ⊗ Museum/Aquarium
- ⊗ Television Commercials
- ⊗ Music Videos
- ⊗ Exhibits/Trade Show
- ⊗ Mobile Entertainment Systems
- ⊗ Others requiring specialty equipment

OUR COMBINED EXPERIENCE COVERS:

- ⊗ CONCEPT THRU COMPLETION Turnkey Systems
- ⊗ SPECIAL EFFECTS Fog, smoke, water + flame effects
- ⊗ MECHANICAL EFFECTS/ SHOW ACTION EQUIPMENT Hydraulics, pneumatics, rigging
- ⊗ THEMED SCENERY/ THEME PARK PARADE FLOATS Automation and control systems
- ⊗ ENGINEERING SERVICES Facility interface determination Equipment development Troubleshooting
- ⊗ CUSTOM RENTAL EQUIPMENT Turntables, rolling rooms, pumps, heavy truss, tanks.
- ⊗ MOCK UP
- ⊗ DEMONSTRATION
- ⊗ RAPID-PROTOTYPING



RANDO PRODUCTIONS, INC

CREATING TOMORROWS ENTERTAINMENT TODAY

818.982.4300

RANDOPRODUCTIONS.COM

joer@randoproductions.com

11939 Sherman Road, North Hollywood, Ca 91605

Entertain Every Chance We Get...

DON BELL
365 Oak Place
Port Orange, FL 32127
800.824.0080
DonBellSigns.com

Ever wonder how companies get their information in the eTEA Update?

Easy. They send it to us!

Any TEA member may send content for us to consider including in the eTEA Update, which goes out to more than 1,000 TEA members worldwide. We look for news and information about projects that are opening (no product only promos, please, but okay to mention if part of a new installation or project), new people and personnel promotions at your firms, new contact information, new branch offices. We appreciate photos and images, but please keep them relatively small (we don't need 10 mb tif files, but rather smaller, web-style jpg format photos).

We can't promise to use everything you send in (that ten page release will be cut down to one or two paragraphs), and please don't send us newsletters full of multiple stories, as we simply do not have the time to go through them and decide which items to include and which not. Each request should focus on one single story. The only exception is in providing personnel information, where you can list more than one person hired or promoted.

BaAM

working with
designers, architects & producers
to get it done

If you would like your information publicized through the eTEA Update, please send it to Gene@TEAConnect.org. Really. It is that easy. One of your member benefits.

Design Development



Project Management



Production & Installation



ETC ARCHITECTURAL

Make your lighting designs happen.

Don't cobble together another control system to achieve your lighting design. Our standard systems make your custom lighting projects a reality. LED's, conventional lights, specialty fixtures - control it all simply, seamlessly, and intuitively with ETC.

UNISON
pharos

To learn about how we did these projects, contact your ETC rep at www.etcconnect.com

*Design: Rich Botta | Photo: Jay Lofthouse

America: Tel +1 608 821 4716 • Europe: Tel +44 (0)23 8896 7000 • Asia: Tel +852 2799 1220 • www.etcarchitectural.com

ETC
Architectural



www.baamproductions.com



Looking For Talent? Opportunities? Check Out TEA's Job Board!

TAYLOR
STUDIOS INC.
THEMATIC DESIGN
& FABRICATION

The first and only firm
in the industry to offer a
FIVE YEAR
warranty!

visit taylorstudios.com/tea
to learn more.

1320 Harmon Drive,
Rantoul, IL 61866
217.893.4874

Life Underground
Audubon Insectarium
New Orleans, LA
Photo © Herb N. Byers, Jr.



Job Seekers

[Click Here](#)



Employers

[Click Here](#)

Where Entertainment Lives

Behind every compelling audio visual experience is an AV system.

Professionals trust Middle Atlantic Products for integrated equipment mounting solutions that protect AV systems and ensure optimal performance for the ultimate entertainment experience.

- Racks and Enclosures
- Thermal Management
- Power Distribution
- Custom Rackshelves
- Cable Management

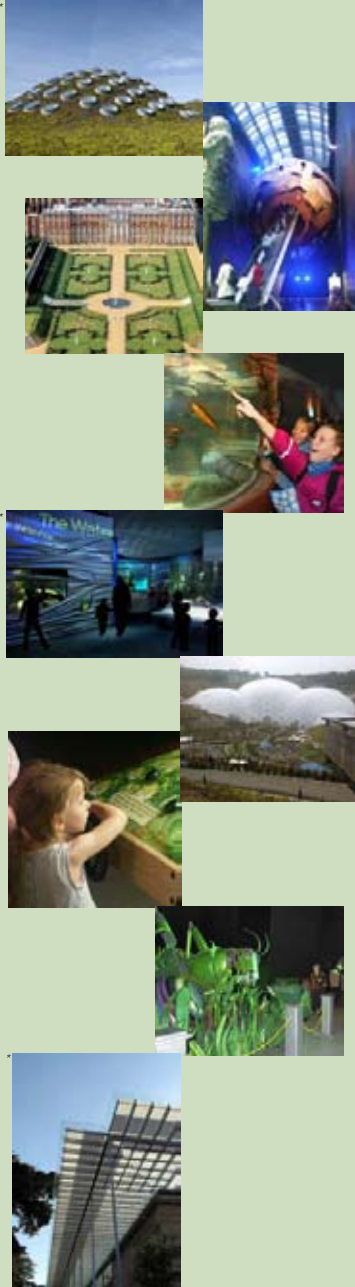
MA
Middle Atlantic Products, Inc.
800-266-7225 | middleatlantic.com

BRING A TOUCH OF THE UNUSUAL TO YOUR EVERYDAY

In branding yourself apart from the competition or keeping your venue new and unique, dynamic colored lighting can play a major part.

Martin Professional has over two decades of creating exciting venues and unique experiences through the application of dynamic color and design.

Martin
www.martin.com



Sustainable Design & Technologies

the challenges & opportunities offered to Leisure Venues & Attractions

4th tilezone LONDON
trends in leisure and entertainment



Supported by:



London Transport Museum
Covent Garden Piazza, London WC2E 7BB
Wednesday 25th March 2009

For more information, please visit: www.tileweb.org

Andrich International Ltd
10 Sambourne Road, Warminster, Wiltshire BA12 8LJ UK
☎: +44 1985 846181. 📠: +44 1985 846163. 📧: tile@andrich.com.

*Images courtesy of The California Academy of Sciences & Thinc Design